

- **Designed for Applications < 500 PSI**
- **No Special Tools or Training Required to Install**
- **Available from 3/4" up to 56" Diameter Applications**
- **Architecture may be tailored to provide additional structural reinforcement of existing corrosion**

SNAP WRAP

*QUICK-APPLIED REINFORCEMENT
FOR PIPES <500 PSI*

Clock Spring® Snap Wrap provides pipe repair and reinforcement solution for pipes operating < 500 psi. The split sleeve design can be applied **quickly and easily** – requiring **no special tools or training**.

Clock Spring® Snap Wrap is a multi-layered system of high-strength, corrosion resistant fiberglass composite split sleeves, installed with a high performance adhesive and a filler material.

- Pre-Cured Sleeve Design
- Sized to wrap tightly around pipe with 3/4" to 56" dia.
- Architecture design may be tailored for desired protection and structural reinforcement

Easily installed, even in tight access locations, Clock Spring® repairs are **fast, economical and safe**. No cutting or welding is required.



PROCESS PLANT, REFINERY AND LOCAL DISTRIBUTION PIPELINES

The quick-application design of Clock Spring® Snap Wrap make it an ideal solution for pipe repairs and reinforcement for low-pressure lines often found in process plants, refineries and local distribution pipeline networks.



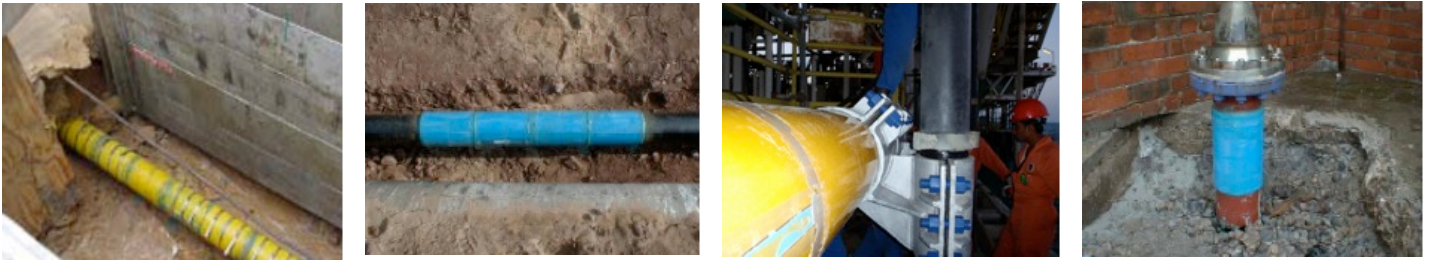
OFFSHORE CAISSON LEAK REPAIR

Clock Spring® Snap Wrap can be used for leak repair, even on large diameter applications installed with tight clearance and in tough conditions.



EXTERNAL CORROSION REPAIR

Lower pressure (< 500 PSI) lines can easily be repaired and reinforced using Clock Spring® Snap Wrap in as fast as 15 minutes per application.



SNAP WRAP BY CLOCK SPRING®		
SLEEVE SPECIFICATIONS		
USE	Provides structural reinforcement and repair for pipelines and pipe works through a composite split-sleeve design allows for quick-application for low-pressure [< 500 psi] pipe works and pipelines .	
STANDARD CONFIGURATION	Unique split-sleeve design allows for tailoring amount of protection and/or structural reinforcement appropriate for application.	
NOMINAL THICKNESS	.250"	6.35 mm
APPLICATION TEMPERATURE	-40° to 160° F	-40° to 70° C
SERVICE TEMPERATURE	Contact Clock Spring Company, L.P. for severe temperature application & service.	-60° to 190° F -51° to 87° C
MATERIAL	Fiberglass and Polyester/Vinyl Ester Resin	
WIDTH	11.500" ± .500"	292mm ± .13mm
ADHESIVE SPECIFICATIONS		
LAP SHEAR STRENGTH	>1200 PSI	
SHELF LIFE	12 Months from Date of Manufacture	
FILLER SPECIFICATIONS		
COMPRESSIVE STRENGTH	>8000 PSI	
SHELF LIFE	12 Months from Date of Manufacture	
ACTIVATOR SPECIFICATIONS		
SHELF LIFE	12 Months from Date of Manufacture [Refrigeration at 38°F-52°F / 3°C -11°C Will Extend Material Shelf Life an Additional Three (3) Months]	

Find Field Reports, Testing Validations and More at www.ClockSpring.com